



LLNL Groundwater Cleanup Project Superfund Public Tour

Site 300

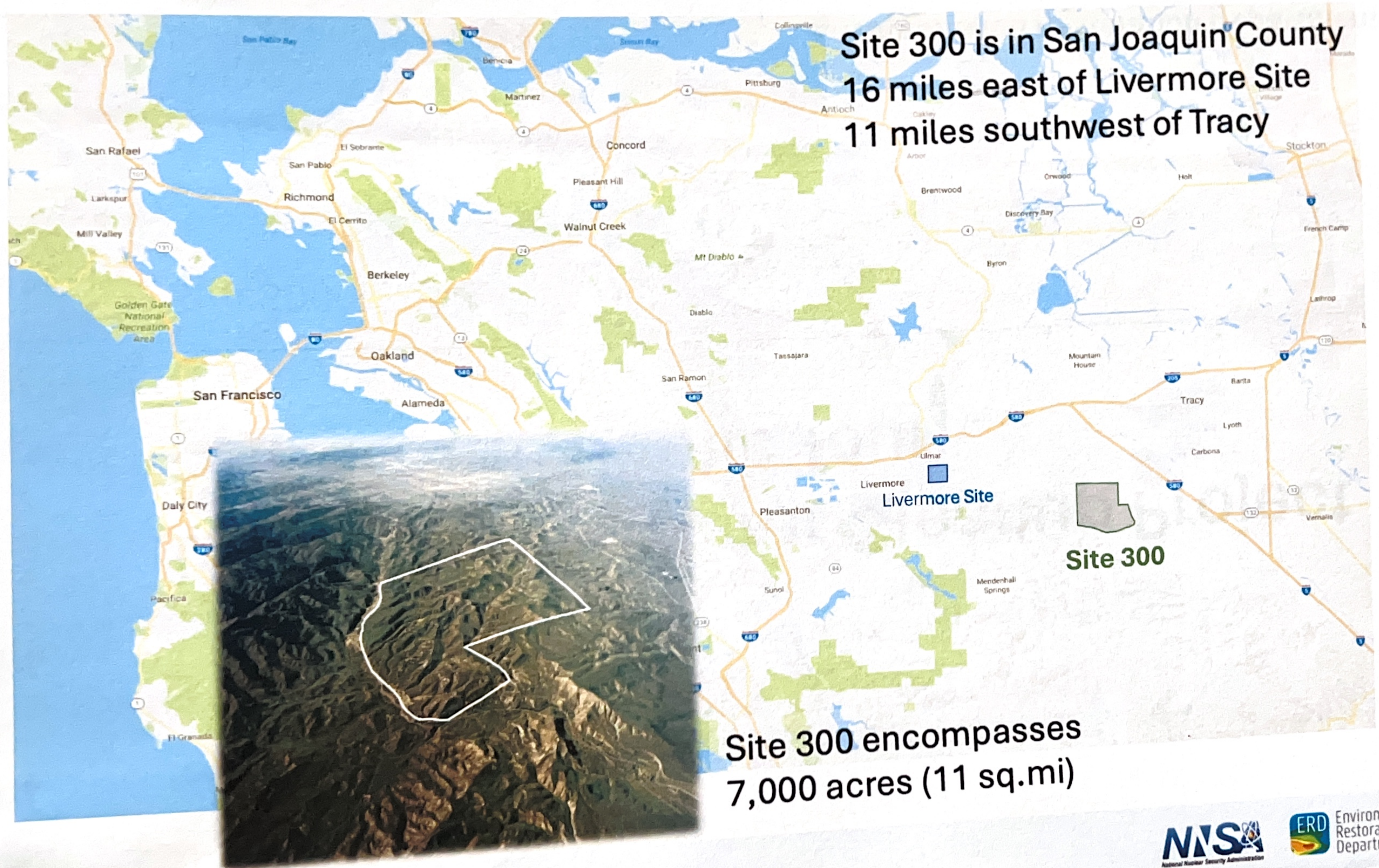
April 23 and 30, 2026

Environmental Restoration Department

Prepared by LLNL under Contract DE-AC52-07NA27344.



LLNL Site 300 CERCLA Groundwater Cleanup Project





LLNL Site 300 Background

- Site 300 was established in 1955
 - experimental test facility to conduct research, development, and testing associated with high-explosives materials
- Groundwater contamination first discovered in 1982
- Added to the National Priorities List (NPL) in 1990
- Constituents of concern are volatile organic compounds (VOCs), high explosive (HE) compounds, tritium, depleted uranium, nitrate, perchlorate, metals, silicone oil, PCBs, dioxins.





LLNL Site 300

Regulatory oversight

- Comprehensive Environmental Response, Compensation, and Liability Act (CERCLA), commonly known as Superfund, was enacted by Congress on December 11, 1980.
- CERCLA was amended by the Superfund Amendments and Reauthorization Act on October 17, 1986.
- Remedial Project Managers (RPMs)
 - Department of Energy (DOE)
 - U.S. Environmental Protection Agency (EPA) -Region IX
 - State of California - Department of Toxic Substances Control (DTSC)
 - State of California – Central Valley Regional Water Quality Control Board-Region 5 (CVRWQCB)
- RPMs meet every six weeks



LLNL Site 300 Background

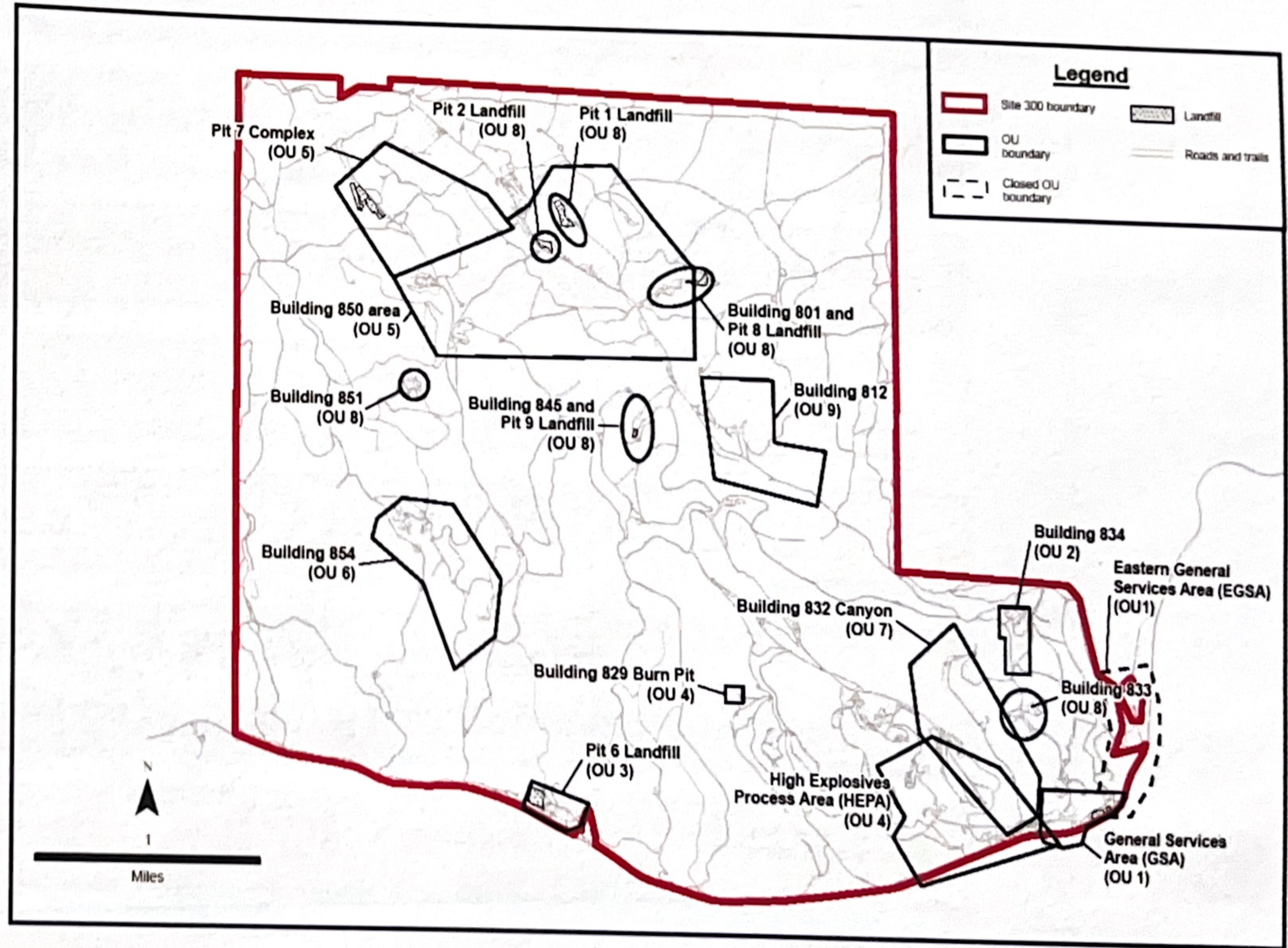
Less than five percent developed.

Site access is controlled.

Wildlife and sensitive habitat:
Home to multiple rare, endangered, and threatened species.

Terrain and weather:
Series of steep hills and canyons that are susceptible to flooding, erosion, wildfires, freezing in winters, and high temperatures in summers.

Operable Units (OUs):
Under CERCLA, there are nine OUs. Each OU has source area(s), contaminated soil and or groundwater



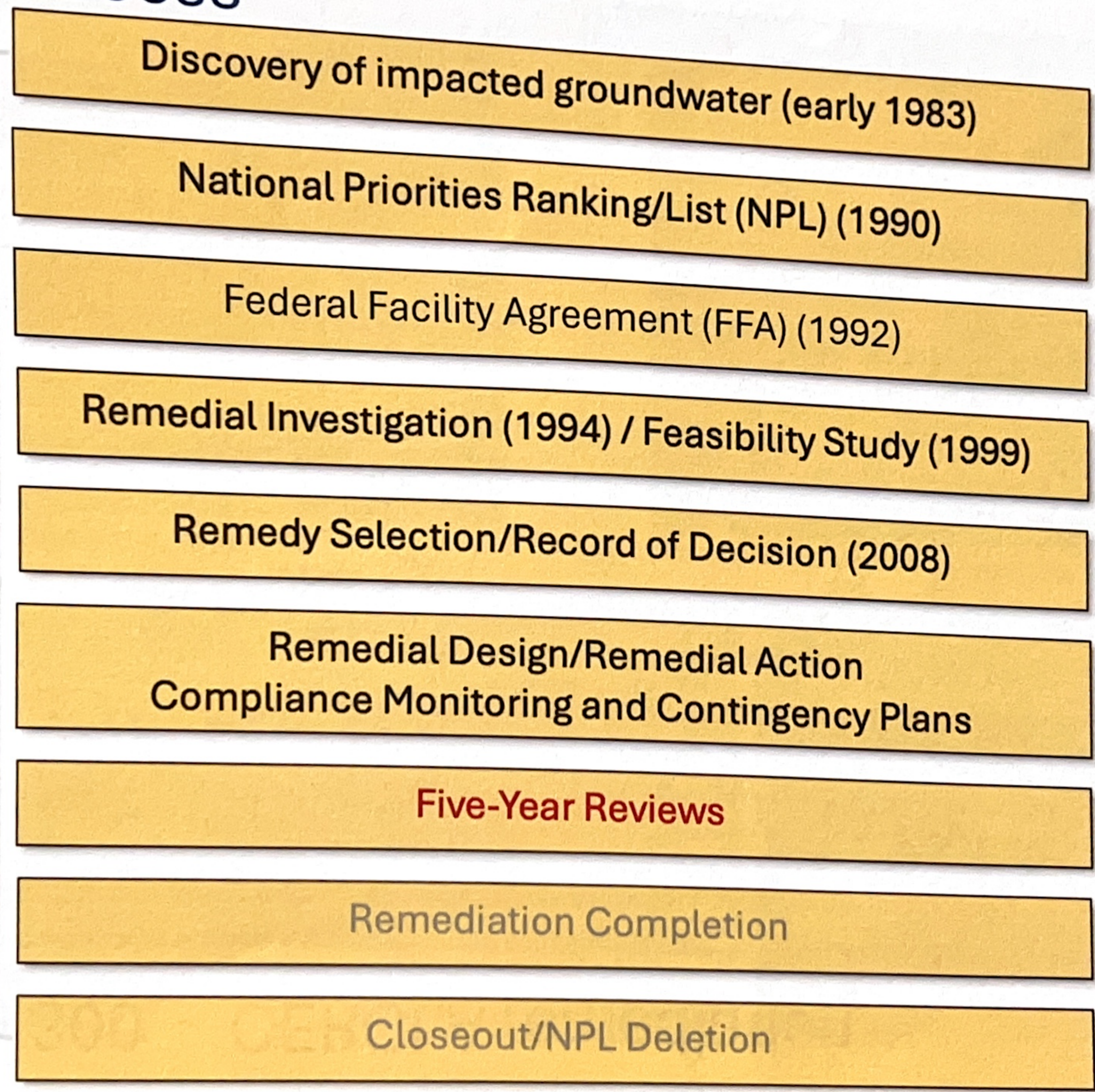
LLNL Site 300 - Groundwater contamination



LLNL Livermore Site CERCLA Process



Continuous enforcement and oversight by regulatory agencies and strong community involvement



← 2026

LLNL Site 300 - CERCLA remediation

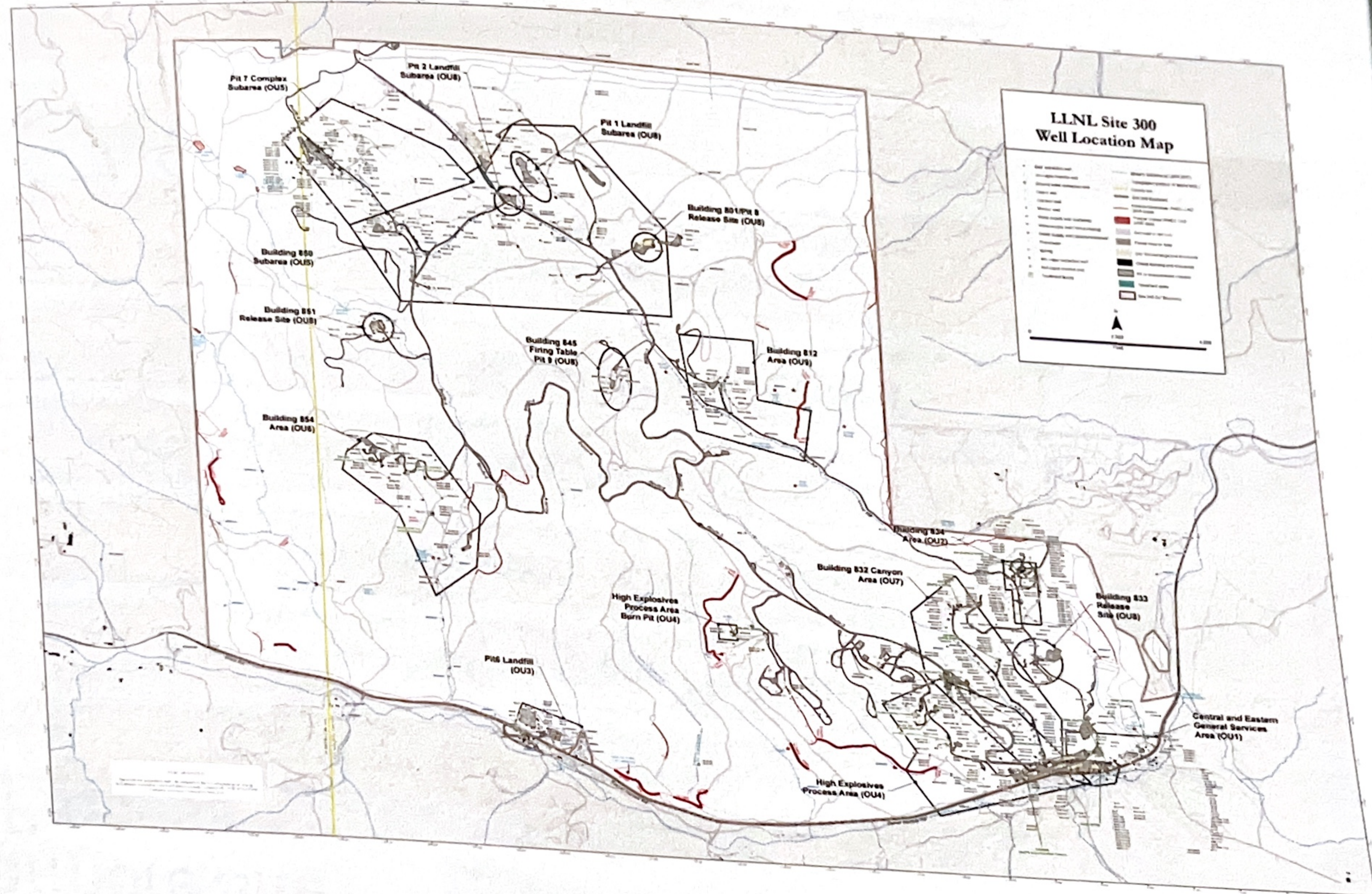


Over 800
groundwater
wells

12 groundwater
treatment,

4 groundwater
extraction, and

5 soil vapor
treatment
facilities



LLNL Site 300 – Implemented remedies



Building 850 Corrective Action Management Unit



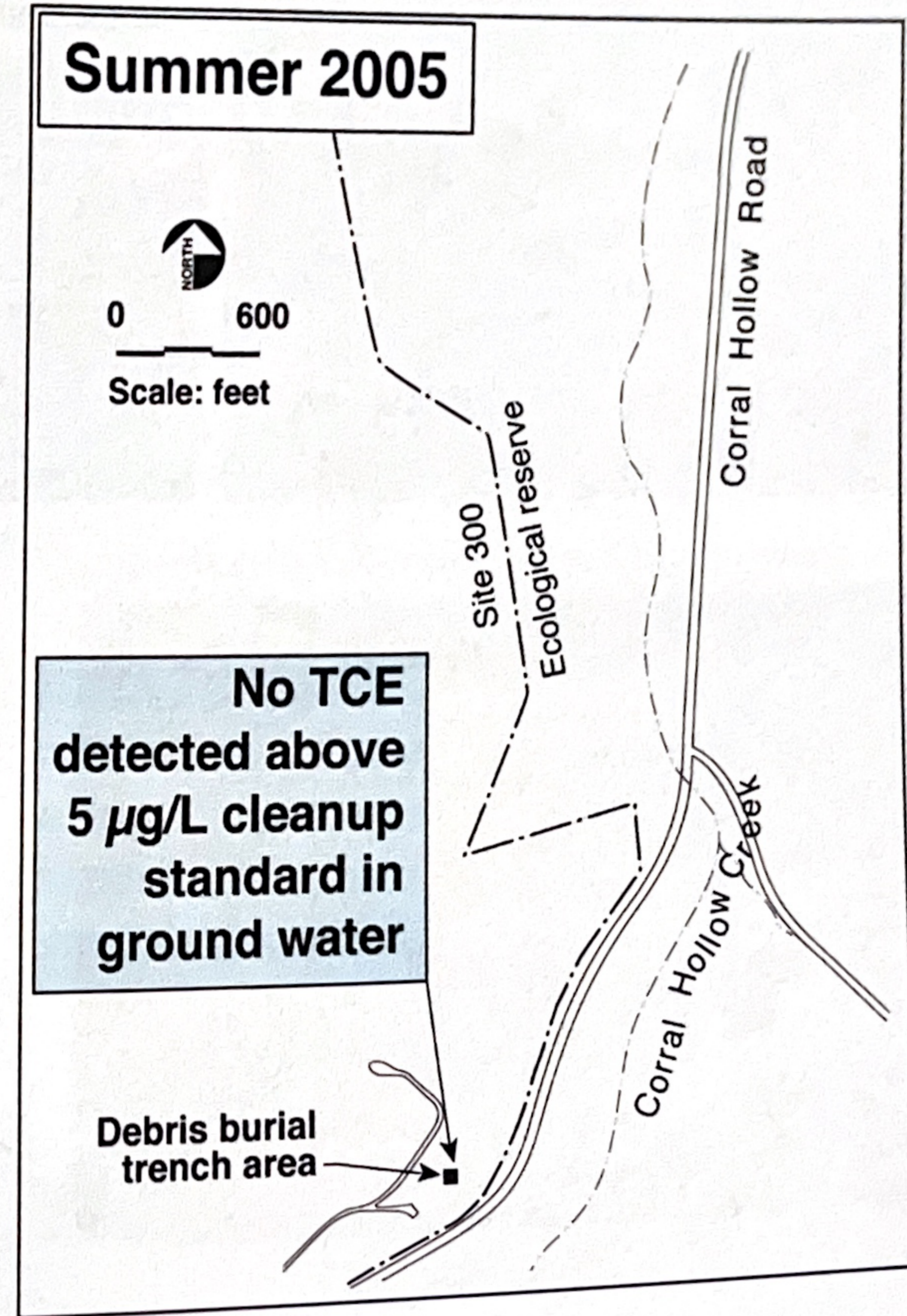
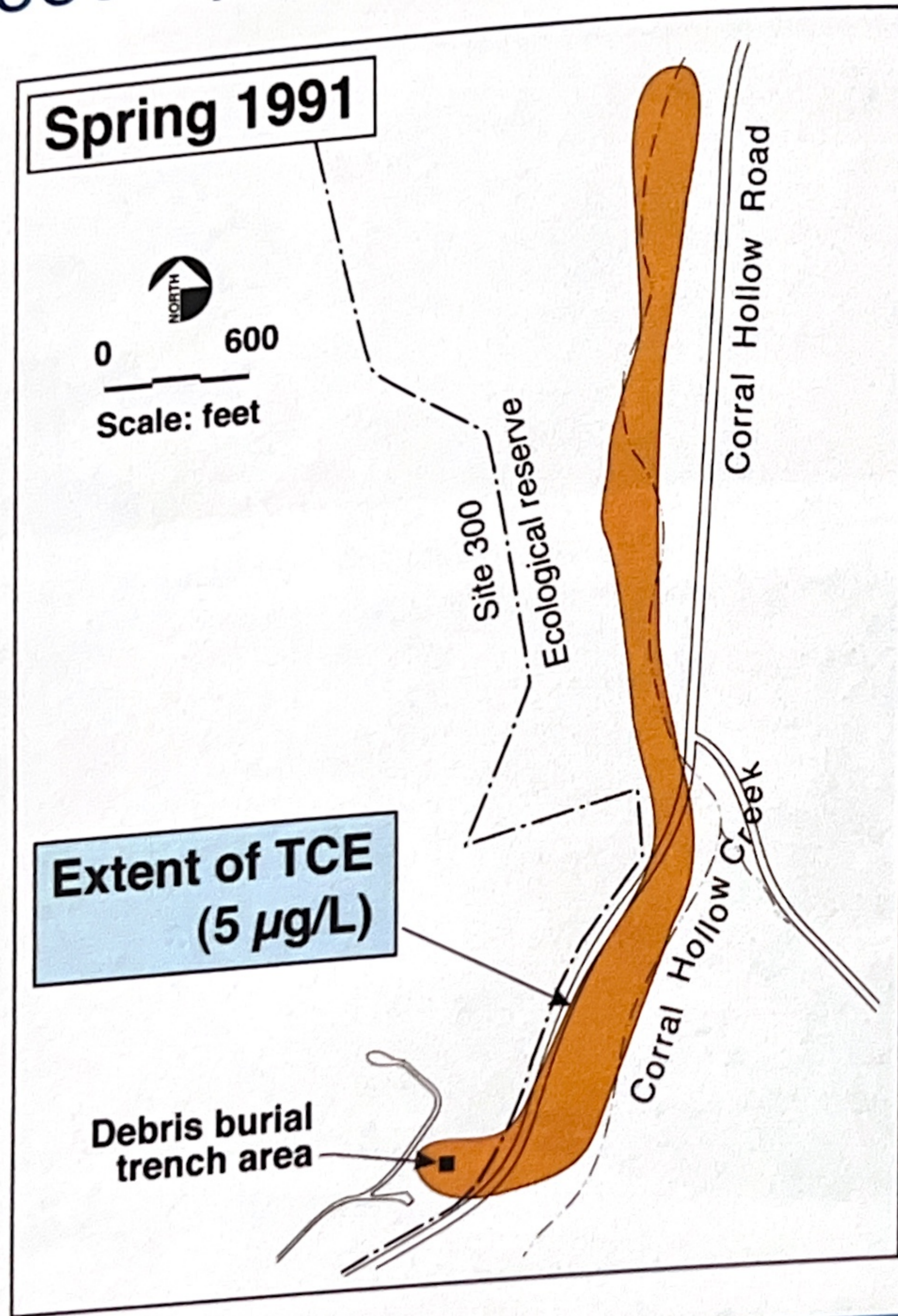
Installation of engineered cap at the Pit 6 Landfill



Ground water and soil vapor extraction and treatment systems reduce contaminant mass in source areas.



Accomplishments



Received regulatory concurrence that Eastern GSA cleanup was complete (2017)

LLNL Site 300 2026 Superfund Tour Stops

